

M40

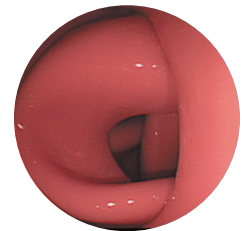
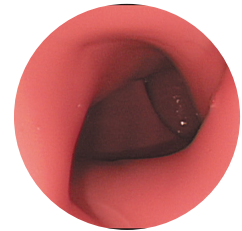
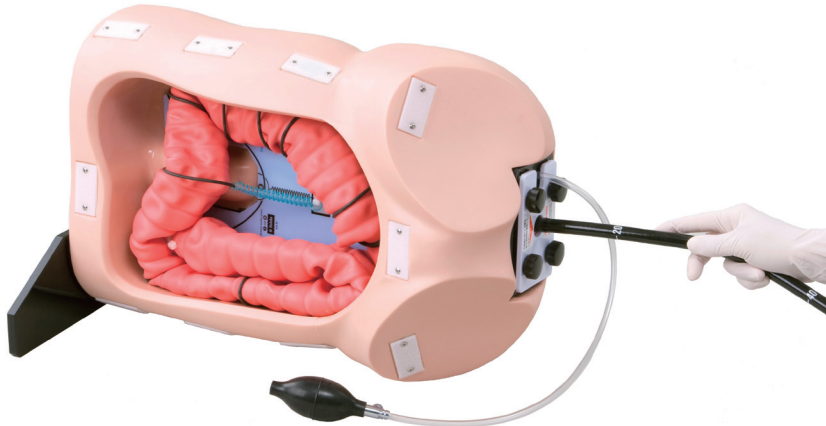


Colonoscope Training Simulator

Training for safe and effective colonoscopy

Soft and flexible colon tube provides a life-like colonoscopy simulation

With the focus of patient safety, skills like "loop" prevention can be practiced for safe advancement to the cecum



FEATURES

- 1 | Offers a variety of difficulty levels. From simple, uncomplicated to complex cases
- 2 | The colon tube can be made airtight, allowing for air insufflation and suction
- 3 | The anal sphincter opening can be manipulated with a hand ball pump

SKILLS

| Colonoscopy

KEY FEATURES

Select difficulty levels of training



Adjustable opening of the anus



Positioning of the body



DESCRIPTIONS

SPECIFICATIONS

Size: 48x22x30cm/18.9x8.7x11.9 inch Weight: 6.5kg/ 14.3lbs

SET INCLUDES

1 abdomen model	30 endoscope lubricants (20 ml each)
1 colon rectum tube	1 plastic bottle
1 anus unit	1 stand
1 air bulb	1 rubber sheet
1 abdomen skin cover	1 anus plug
1 set colon fixture	1 training guide
5 colon layout guides (6 cases total)	1 storage case
30 lubricants for colon-rectum tube (50 ml each)	1 instruction manual

MATERIALS

Soft resin, hard resin

Latex free

REPLACEMENT PARTS

11361-010	1 colon-rectum tube
11361-020	1 anus unit
11361-030	1 colon fixture set
11361-120	1 set of colon layout guide
11361-040	lubricant for colon-rectum tube (blue packs) 30 pcs x 50 ml each
11361-050	endoscope lubricant (pink packs) 30 pcs x 20 ml each
11361-090	anus plug for M40
11361-100	plastic bottle for MW40
11361-110	stand for M40

* Endoscope is not included.

