



MW4

## Ultrasound-Guided Thoracentesis Simulator

MW4A

## Ultrasound-Guided Thoracentesis Simulator - Strap-on set -

MW15

## Ultrasound-Guided Pericardiocentesis Simulator

MW17

## Ultrasound-Guided Thoracentesis/ Pericardiocentesis Simulator

### Product Supervision

Takahiro Amano, M.D.  
Vice President  
Senior Vice-Dean, Postgraduate School  
Professor and Director, Center of Postgraduate Medical Education  
International University of Health and Welfare  
Honorary Director, Sanno Medical Center



### SKILLS

#### Thoracentesis

- | Patient positioning
- | Recognition of anatomical landmarks by ultrasound
- | Assessment of level and volume of pleural effusion
- | Determination of insertion site
- | Needle insertion and collection of fluid

### SKILLS

#### Pericardiocentesis

- | Patient positioning
- | Visualization of pericardial fluid under ultrasound scanning
- | Landmark palpation
- | Needle insertion to the pericardial space
- | Aspiration of pericardial effusion

### DESCRIPTIONS

#### SET INCLUDES

|                                       | MW4 | MW4A | MW15 | MW17 |
|---------------------------------------|-----|------|------|------|
| 1 adult chest model                   | ✓   |      | ✓    | ✓    |
| 1 mid-axially line unit               | ✓   | ✓    |      | ✓    |
| 1 mid-scapular line unit              | ✓   | ✓    |      | ✓    |
| 1 pericardiocentesis unit             |     |      | ✓    | ✓    |
| 1 pillow for positioning              | ✓   |      | ✓    | ✓    |
| 1 explanation model for thoracentesis | ✓   |      | ✓    | ✓    |
| 1 instruction manual                  | ✓   | ✓    | ✓    | ✓    |

#### Accessories

|                                | MW4 | MW4A | MW15 | MW17 |
|--------------------------------|-----|------|------|------|
| 1 irrigator                    | ✓   |      |      | ✓    |
| 1 funnel                       | ✓   | ✓    |      | ✓    |
| 1 syringe (50ml)               | ✓   | ✓    | ✓    | ✓x2  |
| 1 joint hose                   |     |      | ✓    | ✓    |
| 1 tube with three-way stopcock | ✓   | ✓    |      | ✓    |
| 1 plastic jar                  | ✓   | ✓    |      | ✓    |

## Thoracentesis

### Simulate thoracentesis on both a torso and SP

This Ultrasound-Guided Thoracentesis Simulator features two types of puncture units: mid-scapular line access and mid-axillary line access. Strap-on (wearable) puncture units facilitate hybrid training sessions with simulated patients.

#### FEATURES

- 1 | Palpable ribs
- 2 | Realistic needle-tip insertion and resistance
- 3 | Strap-on units to practice patient positioning and communication
- 4 | Two sites for access: right mid-scapular line and left mid-axillary line
- 5 | Volume of pleural effusion can be controlled to set different levels of difficulty.
- 6 | Body torso for independent training. (Only for MW4)



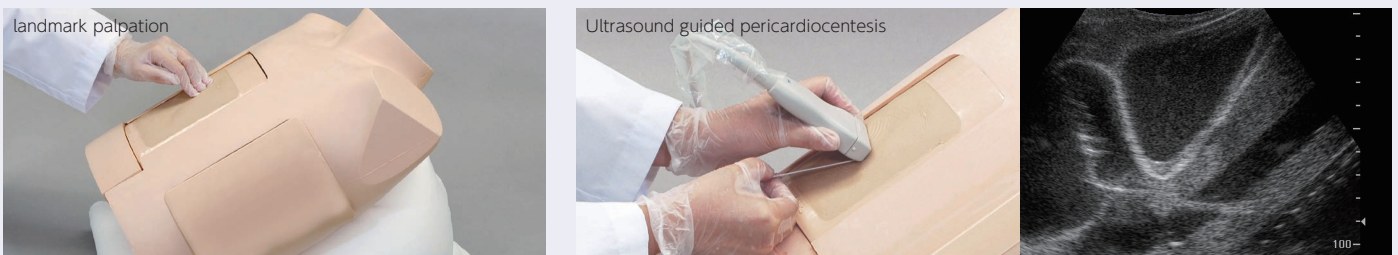
## Pericardiocentesis

### Practice patient safety during pericardiocentesis with ultrasound guidance

This simulator allows trainees to insert the needle under ultrasound guidance, pierce the "pericardial sac" and aspirate pericardial fluid.

#### FEATURES

- 1 | Durable and replaceable puncture pad
- 2 | Practice both the subxiphoid approach and parasternal approach through palpable and ultrasonic landmarks.
- 3 | Realistic needle tip sensation during puncture of the "pericardial sac"



Identification of "Larrey's space" (left xiphisternal junction) for needle insertion.

Inserting needle to the pericardial space with ultrasound guidance. Ventricles, ribs, pericardium, liver and main artery can be visualized.

#### DESCRIPTIONS

##### SPECIFICATIONS

Torso size: W40 x D25 x H50 cm / 15.7 x 9.9 x 19.7 inch  
 Thoracentesis pad size: W16 x D7 x H21 cm / 6.3 x 2.76 x 8.3 inch  
 Pericardiocentesis pad size: W16 x D14 x H21 cm / 6.3 x 5.6 x 8.3 inch  
 Weight: 9.65kg / 21.27lbs

##### MATERIALS

Soft resin, hard resin  
 Latex free

##### RECOMMENDED DEVICES

Thoracentesis: 22 G/ 23 G needle  
 Pericardiocentesis: 18 G needle

##### REPLACEMENT PARTS

11383-010 2 mid-axillary line puncture pads  
 11383-020 2 mid-scapular line unit puncture pads } for MW4, MW17, MW4A  
 11383-030 2 replacement lungs  
 11394-010 2 pericardiocentesis pads for MW15/MW17