



Elderly Pressure Injury Foot

LF00933U and LF00944U

INSTRUCTION GUIDE



LF00933U



LF00944U



The **Life/form®** Elderly Pressure Injury Foot for instruction on the care and cleaning of pressure injuries in various stages. Pressure injuries appear over pressure points such as heels, tips of toes, between toes, or anywhere the bones may protrude and rub against socks, shoes, or bed sheets. This Elderly Pressure Injury Foot contains all four severity stages:

STAGE 1

Located on the bottom of the toe. Surface of the skin is red. A patient may feel the area is painful, firm, soft, warmer, or cooler compared to other skin tissue.

STAGE 2

Located on the bottom of the foot just under the toe. Surface of the skin is red. Wound extends deeper into the skin layers. Partial thickness loss of dermis presenting a shallow open ulcer with a red-pink wound bed.

STAGE 3

Located on the side of the foot. Surface of the skin is red. Wound looks like a crater and reaches the bottom layer of the skin. Full thickness tissue loss. Subcutaneous fat may be visible but bone, tendon, and muscle are not exposed.

STAGE 4

Located on the heel of the foot. Surface of the skin is red. Wound has destroyed a great amount of tissue and has damaged muscle, bone, joints, and tendons. Full thickness tissue loss with exposed bone, tendon, or muscle. Slough or eschar may be present on some parts. Often includes tunneling.

CARE AND MAINTENANCE

Ink, ballpoint pen, certain printed paper, and plastics will leave an indelible stain when in contact with the simulator. Gently clean simulator with warm soapy water and pat dry with clean towel.

Actual product may vary slightly from photo. Nasco reserves the right to change product color, materials, supplies, or function as needed.

Other Available **Life/form** Simulators

- LF00934U** Pressure Ulcer/Bedsore Models, Light
- LF00945U** Pressure Ulcer/Bedsore Models, Dark
- LF00948U** Negative-Pressure Wound Therapy Trainers
- LF00950U** Skin Cancer Trainers — Enlarged, Light
- LF00951U** Skin Cancer Trainers — Enlarged, Dark
- LF04084U** Edema Foot with Deep Tissue Injury, Light
- LF04129U** Edema Foot with Deep Tissue Injury, Medium



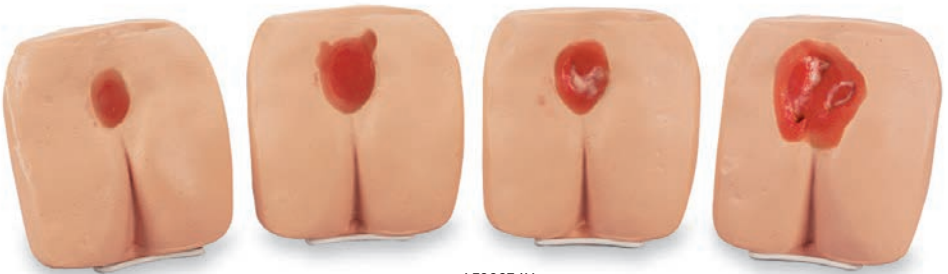
LF04084U



LF00948U



LF00950U



LF00934U



ONLINE:
E-MAIL:
PHONE:
ADDRESS:

NascoHealthcare.com
lifeform@enasco.com
1.800.431.4310
901 Janesville Ave.
Fort Atkinson, WI 53538